

# BURGIN ATKINSON

& C O M P A N Y

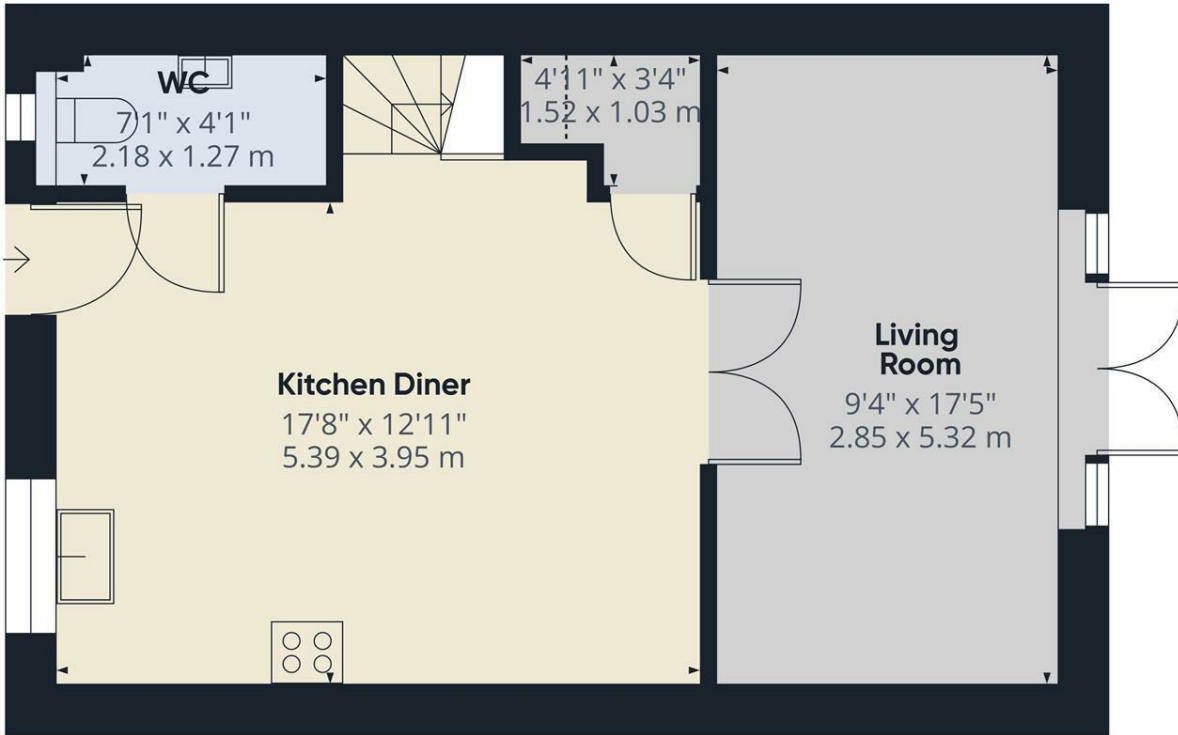


## 16 Blossom Grove, Retford, DN22 7XH

3 BEDROOM SEMI-DETACHED HOME - NO ONWARD CHAIN - PERFECTLY PRESENTED THROUGHOUT - SPACIOUS KITCHEN DINER - FAMILY BATHROOM, EN-SUITE AND W/C - SOUGHT AFTER LOCATION - OFF STREET PARKING - EPC B.

- 3 Bedroom Semi Detached Home
- No Onward Chain
- Perfectly Presented Throughout
- Spacious Kitchen Diner
- Family Bathroom, En-suite and W/C.
- Sought After Location
- Off-Street Parking
- EPC - B

**£220,000**



**Approximate total area<sup>(1)</sup>**  
 470 ft<sup>2</sup>  
 43.7 m<sup>2</sup>

**Reduced headroom**  
 3 ft<sup>2</sup>  
 0.3 m<sup>2</sup>

(1) Excluding balconies and terraces

Reduced headroom  
 ----- Below 5 ft/1.5 m

Calculations reference the RICS IPMS 3C standard. Measurements are approximate and not to scale. This floor plan is intended for illustration only.

GIRAFFE360

Ground Floor

